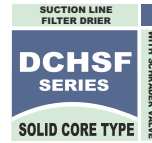


# SUCTION LINE FILTER DRIER DCHSF SERIES (SOLID CORE TYPE)

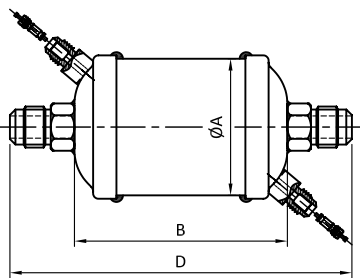
## IMAGES & DRAWINGS



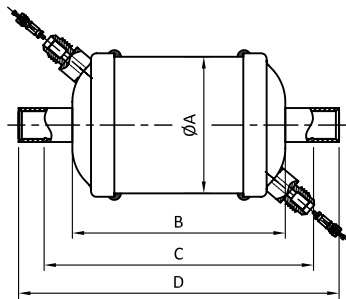
File No. SA33181



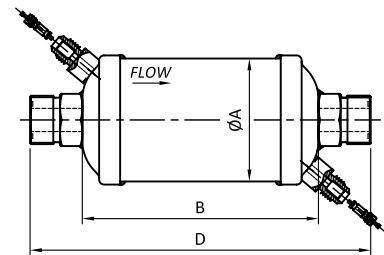
### DIMENSIONAL DATA



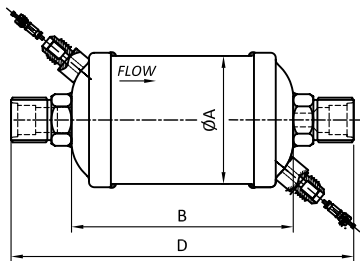
DRAWING -1



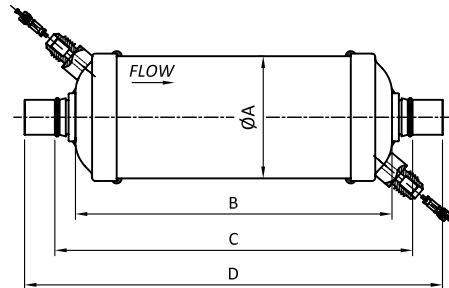
DRAWING -2



DRAWING -3



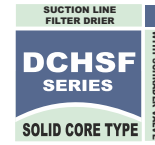
DRAWING -4



DRAWING -5

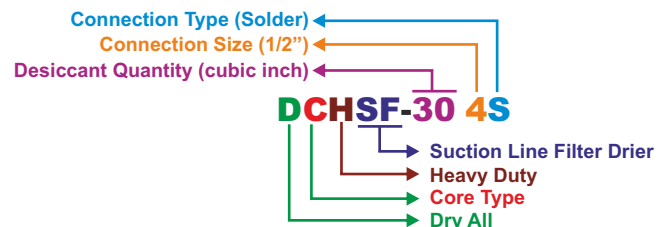
# SUCTION LINE FILTER DRIER DCHSF SERIES (SOLID CORE TYPE)

## MODELS AVAILABLE

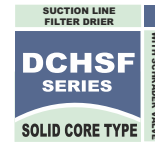


Sr No.	Model	Connection Type	Outer Dia ØA		Body Length B		Stopper to Stopper Length C		Overall Length D		Refer Drawing No.				
			mm	Inch	mm	Inch	mm	Inch	mm	Inch					
1	DCHSF-052F	1/4" SAE			78	3.07	--	--	124	4.88	DRAWING - 1				
2	DCHSF-052S	1/4" ODF					108	4.25	128	5.04	DRAWING - 2				
3	DCHSF-053F	3/8" SAE					--	--	132	5.20	DRAWING - 1				
4	DCHSF-053S	3/8" ODF					108	4.25	128	5.04	DRAWING - 2				
5	DCHSF-082F	1/4" SAE	Ø 63.5	Ø 2.5	99	3.90	--	--	145	5.71	DRAWING - 1				
6	DCHSF-082S	1/4" ODF					129	5.08	149	5.87	DRAWING - 2				
7	DCHSF-083F	3/8" SAE					--	--	153	6.02	DRAWING - 1				
8	DCHSF-083S	3/8" ODF					129	5.08	149	5.87	DRAWING - 2				
9	DCHSF-084F	1/2" SAE					--	--	159	6.26	DRAWING - 1				
10	DCHSF-084S	1/2" ODF					129	5.08	149	5.87	DRAWING - 2				
11	DCHSF-163F	3/8" SAE							122	4.80	--	--	176	6.93	DRAWING - 1
12	DCHSF-163S	3/8" ODF									152	5.98	172	6.77	DRAWING - 2
13	DCHSF-163R	11/16-16ORFS									--	--	160	6.29	DRAWING - 3
14	DCHSF-163ORN	3/8" O RING									--	--	176	6.92	DRAWING - 4
15	DCHSF-164F	1/2" SAE	--	--	182	7.17					DRAWING - 1				
16	DCHSF-164S	1/2" ODF	152	5.98	172	6.77					DRAWING - 2				
17	DCHSF-164R	13/16-16ORFS	--	--	170	6.69					DRAWING - 3				
18	DCHSF-165F	5/8" SAE	--	--	190	7.48					DRAWING - 1				
19	DCHSF-165S	5/8" ODF	152	5.98	172	6.77					DRAWING - 2				
20	DCHSF-165R	1"-14 ORFS	--	--	170	6.69					DRAWING - 3				
21	DCHSF-303F	3/8" SAE	Ø 76.2	Ø 3	190	7.48					--	--	244	9.61	DRAWING - 1
22	DCHSF-303S	3/8" ODF									220	8.66	240	9.45	DRAWING - 2
23	DCHSF-303R	11/16-16ORFS					--	--	228	8.97	DRAWING - 3				
24	DCHSF-303ORN	3/8" O RING					--	--	244	9.60	DRAWING - 4				
25	DCHSF-304F	1/2" SAE					--	--	250	9.84	DRAWING - 1				
26	DCHSF-304S	1/2" ODF					220	8.66	240	9.45	DRAWING - 2				
27	DCHSF-304R	13/16-16ORFS					--	--	238	9.37	DRAWING - 3				
28	DCHSF-305F	5/8" SAE					--	--	258	10.16	DRAWING - 1				
29	DCHSF-305S	5/8" ODF					220	8.66	240	9.45	DRAWING - 2				
30	DCHSF-305R	1"-14 ORFS					--	--	244	9.61	DRAWING - 3				
31	DCHSF-306F	3/4" SAE					--	--	270	10.63	DRAWING - 1				
32	DCHSF-306S	3/4" ODF					220	8.66	240	9.45	DRAWING - 2				
33	DCHSF-307S*	7/8" ODF					220	8.66	264	10.39	DRAWING - 5				
34	DCHSF-309S*	1 1/8" ODF					220	8.66	274	10.79	DRAWING - 5				
35	DCHSF-414F	1/2" SAE	Ø 88.9	Ø 3.5	198	7.80	--	--	258	10.16	DRAWING - 1				
36	DCHSF-414S	1/2" ODF					228	8.98	248	9.76	DRAWING - 2				
37	DCHSF-415F	5/8" SAE					--	--	266	10.47	DRAWING - 1				
38	DCHSF-415S	5/8" ODF					228	8.98	248	9.76	DRAWING - 2				
39	DCHSF-415-4F	1/2" SAE(OUT)&5/8 SAE(IN)					--	--	262	10.31	DRAWING - 1				
40	DCHSF-415-4R	13/16-16ORFS(OUT) & 1"-14 ORFS(IN)					--	--	235	9.25	DRAWING - 3				
41	DCHSF-417S*	7/8" ODF					228	8.98	272	10.71	DRAWING - 5				
42	DCHSF-419S*	1-1/8" ODF					228	8.98	282	11.10	DRAWING - 5				

- 1) Internal Assembly - Bead Type
- 2) Maximum Working Pressure - 45 bar ( 653 psig)
- 3) SAE, ORFS & 'O' Ring Type Connection are in Steel, Nickel Plated
- 4) ODF Type Connection is in Steel & Nickel Plated
- 5) \*Mark Connection Steel Plated



# SUCTION LINE FILTER DRIER DCHSF SERIES (SOLID CORE TYPE)



## SELECTION RECOMMENDATION

SR NO.	Description	Connections	Flow Capacity Tan @ 1psi ΔP (for kw multiply Ton by 3.5)				Water Capacity drops of water									
			R-134a	R-22 & R-410A	R-407C	R-404A & R-507	R-134a		R-22		R-407C		R-410A		R-404A & R-507	
							75°F	125°F	75°F	125°F	75°F	125°F	75°F	125°F	75°F	125°F
1	DCHSF - 052F	1/4" SAE	2	2.28	2.28	1.42	201	186	186	136	156	126	131	101	206	196
2	DCHSF - 052S	1/4" ODF														
3	DCHSF - 053F	3/8" SAE														
4	DCHSF - 053S	3/8" ODF	5.14	5.42	5.42	4										
5	DCHSF - 082F	1/4" SAE	2	2.28	2.28	1.42										
6	DCHSF - 082S	1/4" ODF														
7	DCHSF - 083F	3/8" SAE	5.42	6	6	4	265	245	250	225	205	165	170	130	275	260
8	DCHSF - 083S	3/8" ODF														
9	DCHSF - 084F	1/2" SAE	7.42	8.28	8.28	5.71										
10	DCHSF - 084S	1/2" ODF														
11	DCHSF - 163F	3/8" SAE														
12	DCHSF - 163S	3/8" ODF	6.2	6.8	6.8	4.57										
13	DCHSF - 163R	11/16-16 ORFS														
14	DCHSF-163ORN	3/8" O Ring	8.5	9.4	9.4	6.2	396	366	271	336	306	246	256	196	406	286
15	DCHSF - 164F	1/2" SAE														
16	DCHSF - 164S	1/2" ODF														
17	DCHSF - 164R	13/16-16ORFS	12.2	13.4	13.4	8.57										
18	DCHSF - 165F	5/8" SAE														
19	DCHSF - 165S	5/8" ODF	6	6.57	6.57	4.28										
20	DCHSF-166S	3/4"ODF														
21	DCHSF-167S	7/8"ODF														
22	DCHSF - 165R	1" - 14 ORFS	8.85	9.71	9.71	6.28										
23	DCHSF - 303F	3/8" SAE														
24	DCHSF - 303S	3/8" ODF														
25	DCHSF - 303R	11/16-16 ORFS	12.85	14	14	9.42										
26	DCHSF -303-ORN	3/8" O RING														
27	DCHSF - 304F	1/2" SAE														
28	DCHSF - 304S	1/2" ODF	17.71	19.42	19.42	12.85										
29	DCHSF - 304R	13/16-16 ORFS														
30	DCHSF - 305F	5/8" SAE														
31	DCHSF - 305S	5/8" ODF	17.71	19.42	19.42	12.85										
32	DCHSF - 305R	1" -14 ORFS														
33	DCHSF - 306F	3/4" SAE														
34	DCHSF - 306S	3/4" ODF	9.14	10	10	6.57										
35	DCHSF - 307S*	7/8" ODF														
36	DCHSF - 309S*	1-1/8" ODF														
37	DCHSF - 414F	1/2" SAE	15.14	16.57	16.57	10.57	1216	1106	1146	1016	951	746	786	586	1266	1162
38	DCHSF - 414S	1/2" ODF														
39	DCHSF - 415F	5/8" SAE														
40	DCHSF - 415S	5/8" ODF	26	28.57	28.57	18.57										
41	DCHSF - 415-4F	5/8"SAE(IN) & 1/2 SAE(OUT)														
42	DCHSF - 415-4R	1-14 ORFS (IN) & 13/16-16 ORFS(OUT)														
43	DCHSF-417S*	7/8" ODF														
44	DCHSF-419*	1-1/8" ODF														

All ratings are in accordance with ANSI/AHRI Standard 710-2009

1. Water in refrigerant at EPD for :

R-134a/R-407C/R-410A/R-404A/R-507A is 50 ppm,

R-22 is 60 ppm.

2. Flow Capacities are based on following standard rating

Flow Rate per Ton of Refrigeration at 86°F Liquid & 5.0°F Saturated Vapor for :

R-134a is 3.1 lb/min/ton,

R-407C is 3.0 lb/min/ton,

R-410A is 2.8 lb/min/ton,

R-404A is 4.1 lb/min/ton,

R-507A is 4.2 lb/min/ton,

R-22 is 3.0 lb/min/ton.